



**REGIONAL SPECIALISED METEOROLOGICAL CENTRE-TROPICAL CYCLONES, NEW DELHI
TROPICAL WEATHER OUTLOOK**

DEMS-RSMC SPECIAL TROPICAL CYCLONES NEW DELHI DATED 29.05.2022

TROPICAL WEATHER OUTLOOK FOR NORTH INDIAN OCEAN (THE BAY OF BENGAL AND ARABIAN SEA) VALID FOR NEXT 120 HOURS ISSUED AT 0600 UTC OF 29.05.2022 BASED ON 0300 UTC OF 29.05.2022.

BAY OF BENGAL:

SCATTERED LOW AND MEDIUM CLOUDS WITH EMBEDDED INTENSE TO VERY INTENSE CONVECTION LAY OVER NORTHEAST BAY OF BENGAL, GULF OF MARTABAN, SOUTHEAST BAY OF BENGAL ADJOINING SOUTH ANDAMAN SEA. ISOLATED LOW AND MEDIUM CLOUDS WITH EMBEDDED ISOLATED MODERATE TO INTENSE CONVECTION LAY OVER CENTRAL BAY OF BENGAL.

PROBABILITY OF CYCLOGENESIS (FORMATION OF DEPRESSION) DURING NEXT 120 HRS:

24 HOURS	24-48 HOURS	48-72 HOURS	72-96 HOURS	96-120 HOURS
NIL	NIL	NIL	NIL	NIL

ARABIAN SEA:

SCATTERED LOW AND MEDIUM CLOUDS WITH EMBEDDED INTENSE TO VERY INTENSE CONVECTION LAY OVER SOUTH ARABIAN SEA MALDIVES & COMORIN AREA. SCATTERED LOW AND MEDIUM CLOUDS WITH EMBEDDED WEAK TO MODERATE CONVECTION LAY OVER SOUTH PARTS OF CENTRAL ARABIAN SEA .

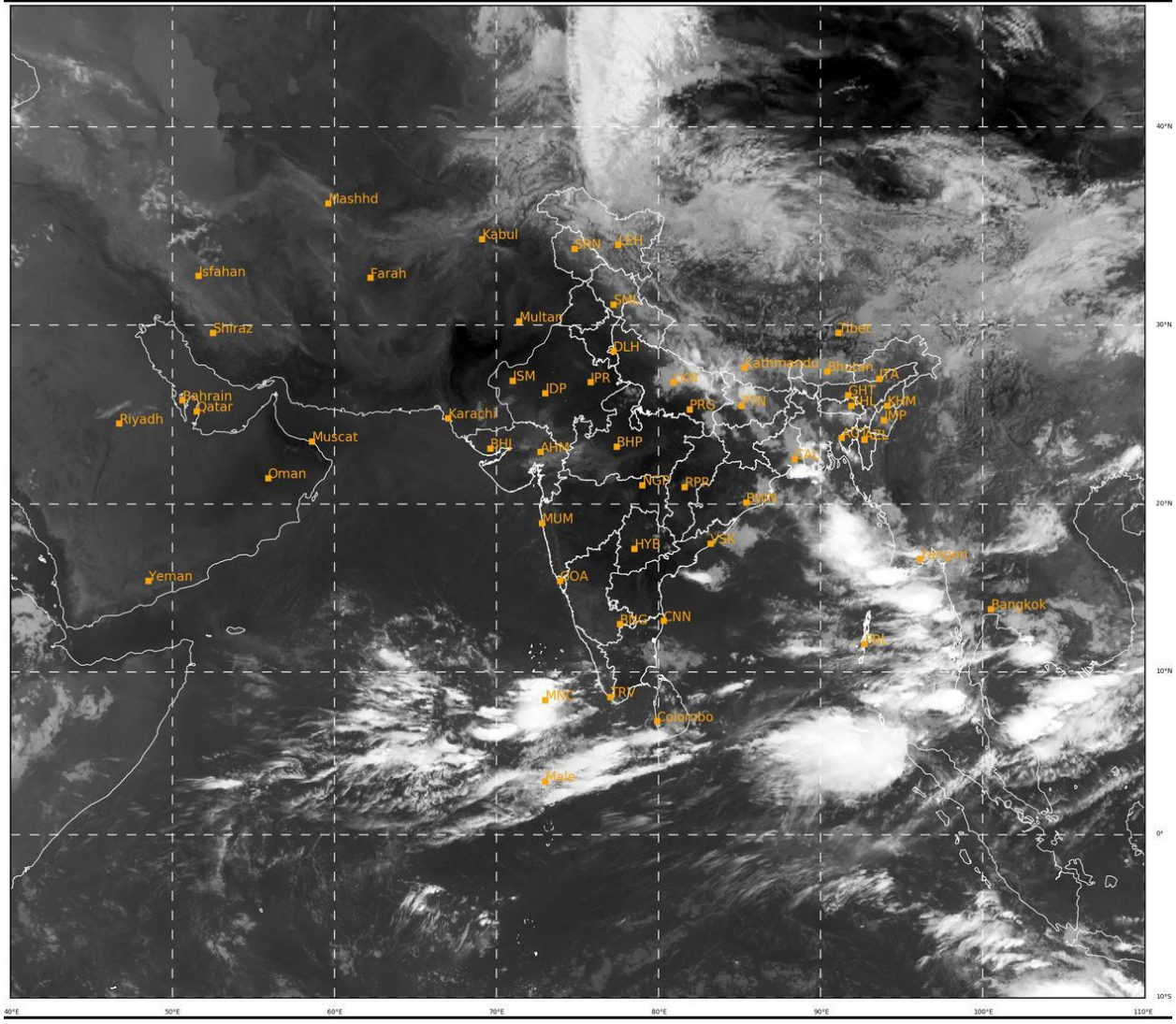
PROBABILITY OF CYCLOGENESIS (FORMATION OF DEPRESSION) DURING NEXT 120 HRS:

24 HOURS	24-48 HOURS	48-72 HOURS	72-96 HOURS	96-120 HOURS
NIL	NIL	NIL	NIL	NIL

REMARKS: NIL

SAT : INSAT-3D IMG
IMG_TIR1 10.8 um
LIC Mercator

29-05-2022/(0300 to 0326) GMT
29-05-2022/(0830 to 0856) IST



365

939

IMD, DELHI

PROBABILITY OF CYCLOGENESIS (FORMATION OF DEPRESSION): NIL: 0%, LOW: 1-33%, MODERATE: 34-66% AND HIGH: 67-100% This is a guidance Bulletin for the WMO/ESCAP Panel Member countries,. Please visit respective National websites for Country specific Bulletins